

# SPEC SHEET + MEASUREMENTS

*Brooks Brothers*

## Brooks Brothers® Women's Mid-Layer Stretch Button Jacket. BB18205

### Product photo



A structured double-knit style with a luxuriously soft hand, this versatile woman's jacket adds a touch of utilitarian flair with a full button-front closure. The jacket can be cinched with a hidden waist drawcord for a more form-fitting look.

- 8-ounce, 76/22/2 polyester/rayon/spandex double-knit
- Faux horn buttons with Brooks Brothers logo
- Adjustable buttoned cuffs
- Hidden button-flap front pockets

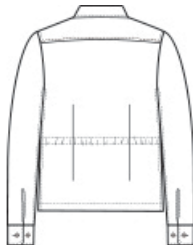
### CARE INSTRUCTIONS

Machine Wash Cold With Like Colors. Do Not Use Fabric Softener. Do Not Bleach. Tumble Dry Low. Remove Promptly. Cool Iron If Necessary.

### Sketches



front



back

# SPEC SHEET + MEASUREMENTS

*Brooks Brothers*

## Brooks Brothers® Women's Mid-Layer Stretch Button Jacket. BB18205

### PRODUCT MEASUREMENTS

	XS	S	M	L	XL	2XL	3XL	4XL
Size	2	4/6	8/10	12/14	16/18	20/22	24/26	28/30
Body Length at Back	23	23 1/2	24	24 1/2	25	25 1/2	26	26 1/2
Bust	18 1/2	19 1/2	20 1/2	22	23 1/2	25	27	29
Sleeve Length from Center Back	31 1/4	31 3/4	32 1/4	32 7/8	33 1/2	34 1/8	34 1/2	34 7/8

**Body Length at Back:** Measured from high point shoulder to finished hem at back.

**Bust:** Measured across the chest one inch below armhole when laid flat.

**Sleeve Length from Center Back:** Measure from Center Back neck to shoulder point to sleeve hem.

### SIZE CHARTS

	XS	S	M	L	XL	2XL	3XL	4XL
Size	2	4/6	8/10	12/14	16/18	20/22	24/26	28/30
Bust	32-34	35-36	37-38	39-41	42-44	45-47	48-51	52-55

# SPEC SHEET + MEASUREMENTS

*Brooks Brothers*

Brooks Brothers® Women's Mid-Layer Stretch Button Jacket. BB18205

## HOW TO MEASURE

---



### **BUST**

Measure under the arm and around the fullest part of the bust with arms down, keeping tape horizontal.

## COLORS

---



Black Heather  
PMS 426C



Navy Blazer  
Heather  
PMS 446C



Windsor Grey  
Heather  
PMS 426C